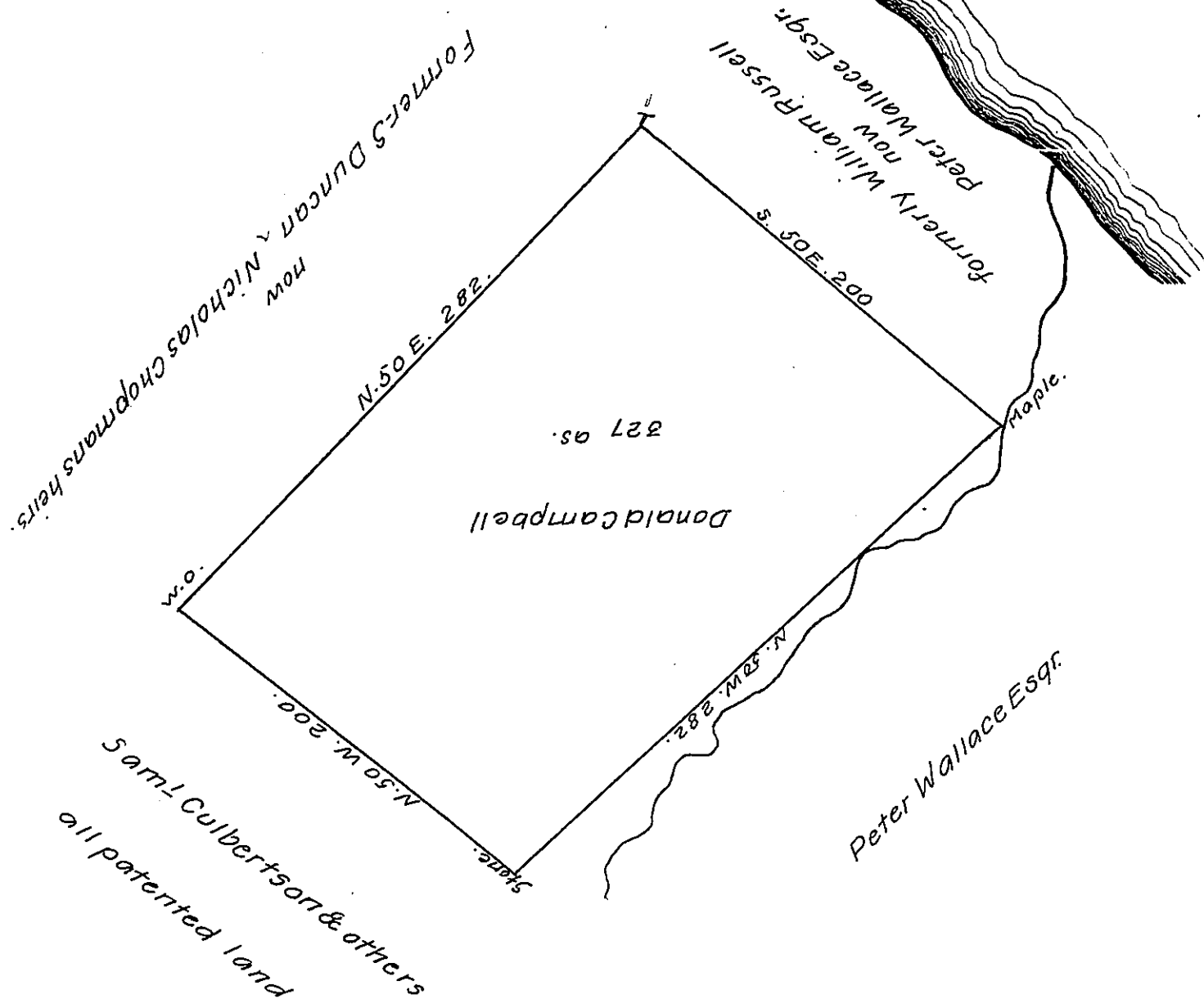


FORM NO 1.



In pursuance of an Application granted to Donald Campbell No. 2806 dated 3d of April 1769 surveyed on the 5th of February 1829 the above described tract of land containing three hundred and twenty seven acres and the allowance proportioned at six per Cent. for Roads &c situate on the South Side of Cone-maugh river at McGees run in Derry Township Westmoreland County Penn.

Gabriel Hiester Esqr., S.L. Carpenter, D.S.
 Surveyor General of Pen.

(Explanation and report on another sheet.)

IN TESTIMONY that the above is a copy of the original remaining on file in the Department of Internal Affairs of Pennsylvania, made conformably to an Act of Assembly approved the 16th day of February, 1833, I have hereunto set my Hand and caused the Seal of said Department to be affixed at Harrisburg, this twenty fifth day of January, 1909.

Nevins Howell
 Secretary of Internal Affairs.